

Salisbury/Sharon Resource Recovery Authority
Transfer Station Building Committee (TSBC)

Wednesday, September 21, 2016

Salisbury Town Hall

NOTE: Minutes are considered DRAFT ONLY until reviewed and acted upon at the next regular meeting

Present:

TSBC Members (Bill Braislin, Dale Jones, Bob Loucks, John Perotti, Tom Bartram)

Also Present (Kevin Grindle of Anchor Engineering, Ann Saunders, Brian Bartram)

Meeting was called to order by B. Braislin at 5:32 p.m.

Approved Agenda – D. Jones moved to approve the agenda, B. Loucks seconded this motion, all others were in favor.

Approve the May 18, 2016 Meeting Minutes – B. Loucks moved to approve the minutes as written D. Jones seconded this motion, all others were in favor.

Update on work being performed at TS site – Curtis Rand:

Most of the soil collection is complete and in place. Upwards of 12,000 yards of soil has been brought to the site and strategically placed where needed or out of the way of future use. Plans for the fall include the continued clearing of approximately 20 trees. Since the last TSBC meeting, Anchor Engineering has drilled and testing the rock.

Continue discussion with Kevin Grindle regarding TS design:

Kevin provided revised site plans with updated detail based upon site meeting with Brian Bartram & Jason Wilson. This is a very close portrayal of a design that the staff is comfortable with. The current conceptual plan conforms to the CT DEEP and US Fish & Wildlife – it mitigates the concerns of the regulatory agencies and therefore qualifies for USDA.

Larger Guard Shack – more of an entry building with an office. Office area and check point. 10x20 building. This removed the office from the main building.

12,000 yards of material are on site. We are very close to having all needed fill material. Kevin & Curtis will meet to quantify an additional material needed so that we can continue to take advantage of the currently available fill.

All required blasting and rock analysis complete. Geotechnical engineer has provided his recommendations – in draft form. Based upon his investigation, he was satisfied which lined up very well with the anticipated strata. Drilled foundations, at this point look very feasible. Expected 5-10 foot drill shaft. Based on this investigation, the line item allocating funds to this seems that there will be cost savings. This is all very positive news at this point.

TSBC reviewed the additional drawings which outlined traffic patterns (red represents commercial user traffic, blue represents pick-up truck & trailer usage, green represents resident with primarily household waste and recyclables, color coded page represents the hopper orientation)

Kevin reminded the group that this is a working level drawing. Pavement, signage, and turning radius adjustments will be made as needed, as well as other minor tweaks once the traffic patterns are solidified.

Next Steps:

- ✓ Local Application process (ie. Planning & Zoning, Conservation, etc...)
- ✓ Anticipated schedule; plans prepared for local applications immediately and present before end of year
- ✓ Final design phase will occur through the winter months; in hopes of early spring bidding and summer or early fall 2017
- ✓ DEEP's solid waste approval can come at any time during the final design phase
- ✓ Roughly July 1, 2018 live at new site
- ✓ Kevin will work on final position of the hoppers
- ✓ TSBC should be present at the local land use committees when the idea is presented
- ✓ Final design details for safety and user comfort should be discussed by TSBC because they will be required for final plans

Comments from Members:

B. Braislin stated that we will keep the meeting schedule for the remainder of 2016 as agreed

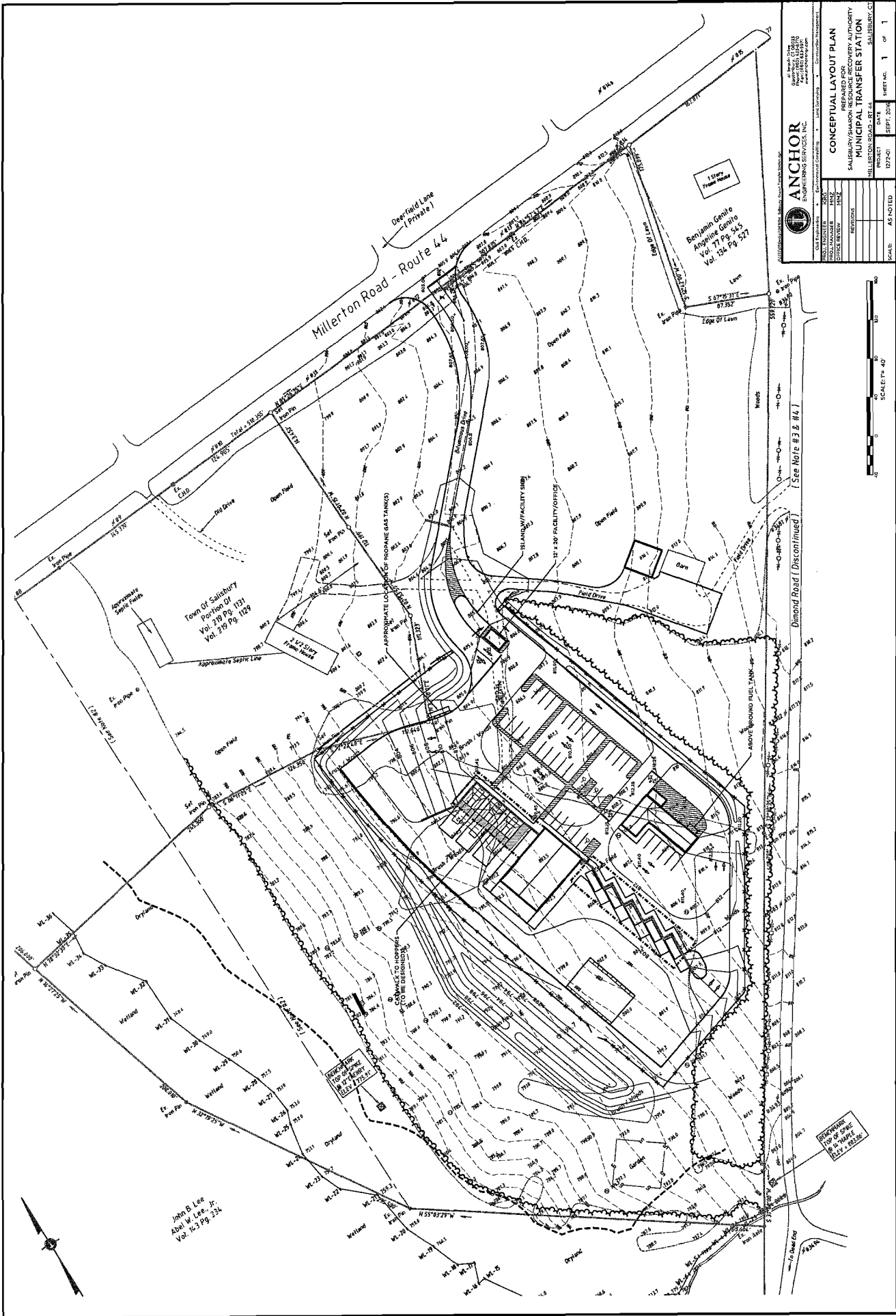
Comments from Public:

B. Loucks moved to adjourn the meeting at 6:29 p.m, D. Jones seconded, all others were in favor.

Holly Leibrock

Salisbury Recording Secretary

RECEIVED



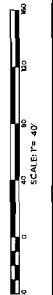
ANCHOR
ENGINEERING SERVICES, INC.

AS BUILT - 12/28/11
PROJECT NO. 1277-01
DATE: SEPT. 2016

CONCEPTUAL LAYOUT PLAN
PREPARED FOR
SALISBURY/SHAMON RESOURCE RECOVERY AUTHORITY
MUNICIPAL TRANSFER STATION

SCALE: AS NOTED SHEET NO. 1 OF 1

DESIGNER	ANCHOR
DRAWN	ANCHOR
CHECKED	ANCHOR
APPROVED	ANCHOR
DATE	SEPT. 2016
SCALE	AS NOTED



John B. Lee
Abel W. Lee, Jr.
Vol. 13 Pg. 234

CONTRACT TO ADJUST TO BE DISCONTINUED

DISCONTINUED TO BE DISCONTINUED

Town Of Salisbury
Portion Of
Vol. 119 Pg. 131
Vol. 119 Pg. 179

Benjamin Centre
Angeline Centre
Vol. 77 Pg. 545
Vol. 134 Pg. 527

[See Note # 3.8 # 4.]

[See Note # 3.8 # 4.]

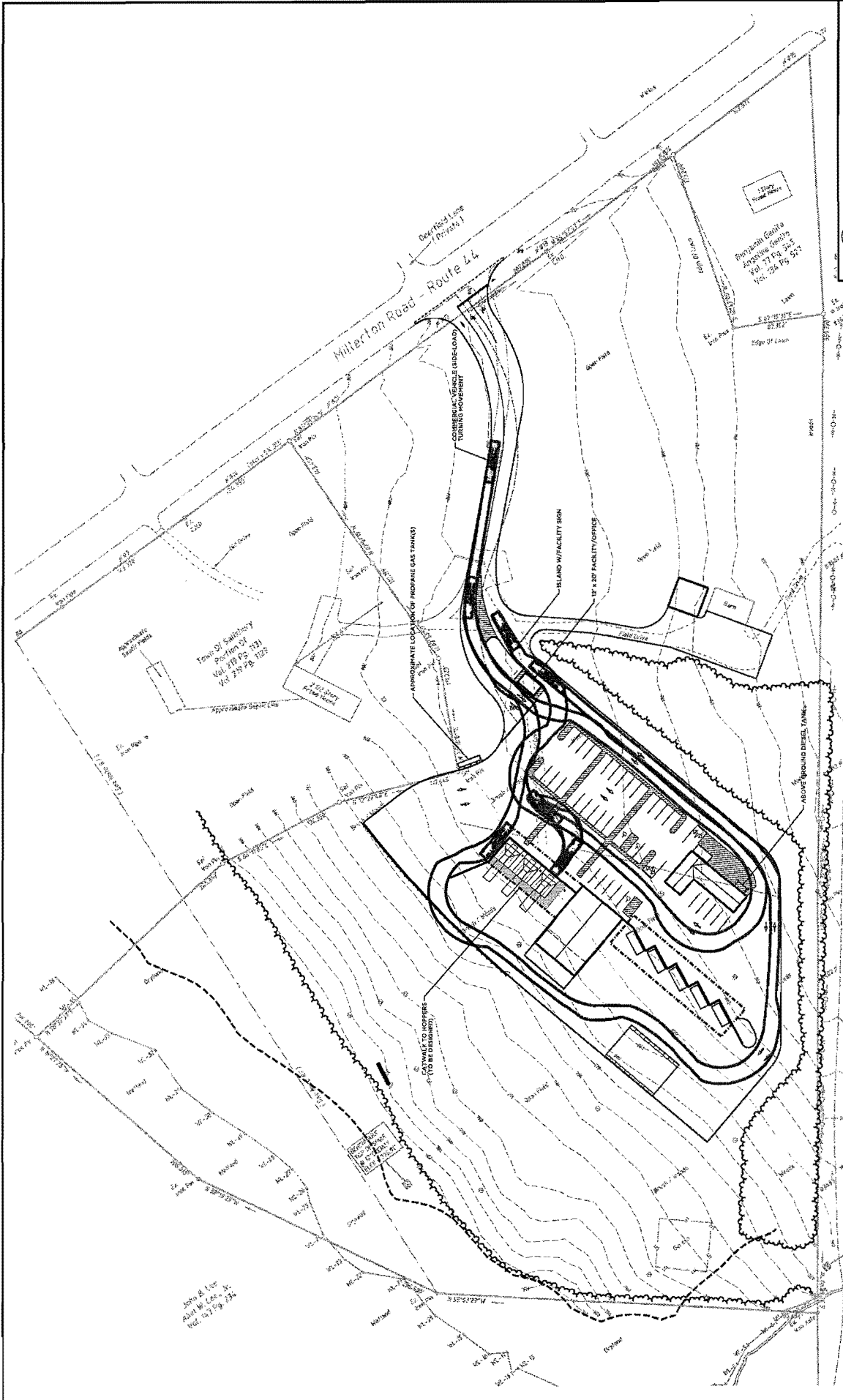
[See Note # 3.8 # 4.]

[See Note # 3.8 # 4.]

[See Note # 3.8 # 4.]

[See Note # 3.8 # 4.]

[See Note # 3.8 # 4.]



ANCHOR
ENGINEERING SERVICES, INC.

1000 W. Main Street
Milton, MA 02186
Tel: 617.552.1234
Fax: 617.552.1235
www.anchor-engineering.com

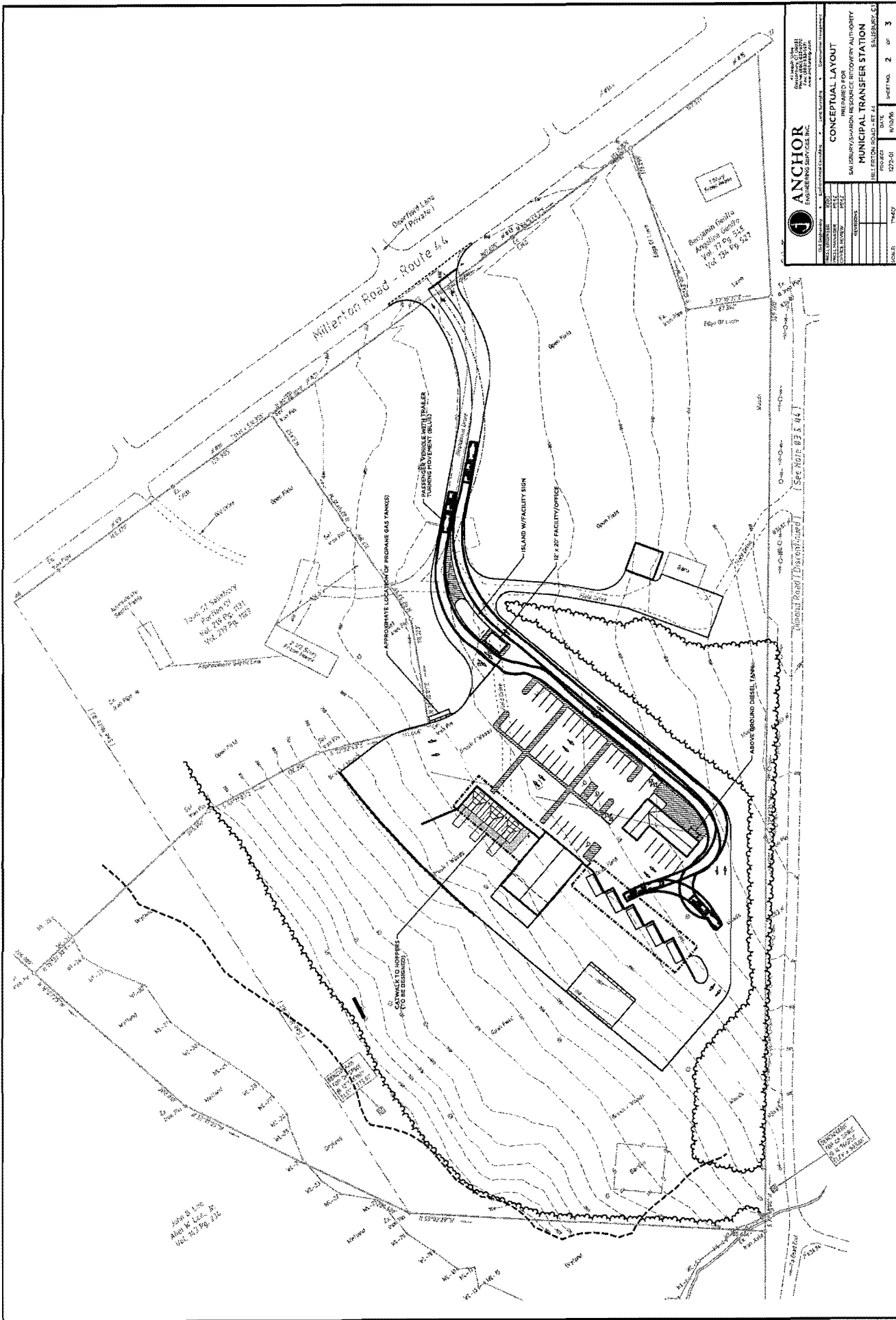
DATE: 08/14/08
SCALE: AS SHOWN
PROJECT: 08-001
SHEET NO. 1 OF 3

CONCEPTUAL LAYOUT
PREPARED FOR:
SALISBURY/SALISBURY RESOURCE RECOVERY AUTHORITY
MUNICIPAL TRANSFER STATION
MILITON ROAD - RT. 44
SALISBURY, CT

DESIGNED BY: [Blank]
CHECKED BY: [Blank]
DATE: [Blank]

John & Lee
Alan W. Lee, Jr.
Tel: 617.992.2322

1000 W. Main Street
Milton, MA 02186
Tel: 617.552.1234
Fax: 617.552.1235
www.anchor-engineering.com

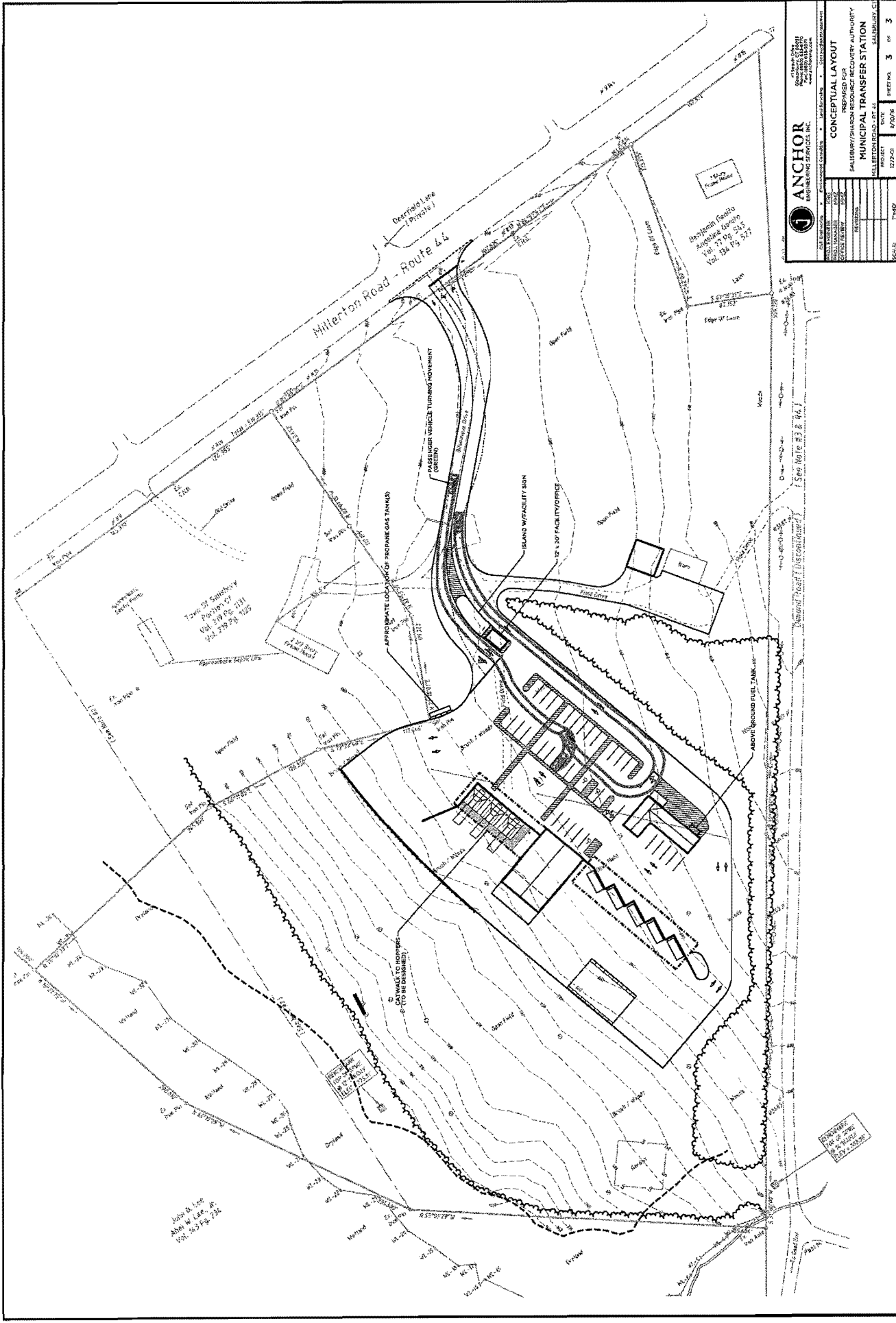


ANCHOR
ENGINEERING SERVICES, INC.

1000 WEST 12TH AVENUE
DENVER, CO 80202
TEL: 303.733.4400
WWW.ANCHOR-ES.COM

CONCEPTUAL LAYOUT

DATE	10/25/05
PROJECT NO.	102-1000
SHEET NO.	2 OF 3
PREPARED FOR MUNICIPAL TRANSFER STATION MILTON ROAD - RT 44 SALEM, CO	



ANCHOR
ENGINEERING SERVICES, INC.

PROJECT: MILLERTON ROAD - RT 44
SHEET NO. 3 OF 3

DATE: 12/24/01

DESIGNED BY: [Name]
CHECKED BY: [Name]
DATE: 12/24/01

CONCEPTUAL LAYOUT
PREPARED FOR:
SALISBURY/SHIRTON RESOURCE RECOVERY AUTHORITY
MUNICIPAL TRANSFER STATION
MILLERTON ROAD - RT 44
SALISBURY, CT

